

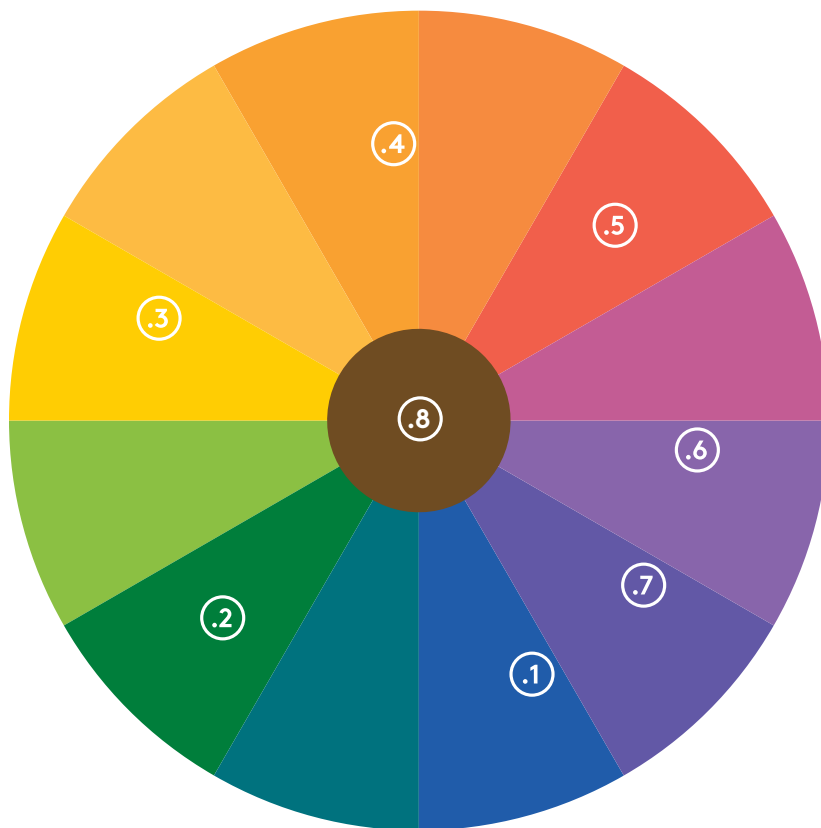
evo

*HUE***VERSE**

OUT-OF-THIS-WORLD COLOUR

REFLECTS

- .1 blue/ash
- .2 green/matte
- .3 yellow/gold
- .4 orange/copper
- .5 red
- .6 purple/pearl
- .7 purple blue/violet
- .8 chocolate



MIXING & PROCESSING TIME



HUE-VERSE PERMANENT COLOUR STANDARD SERIES

mixing: 1:1.5
processing time: 35 minutes



HUE-VERSE PERMANENT COLOUR HIGH LIFT BLONDE SERIES

mixing: 1:2
processing time: 50 minutes



HUE-VERSE DEMI-PERMANENT GLOSS

mixing: 1:1
processing time: 20 minutes

DEVELOPERS



6.5 VOL (1.95%) HUE-VERSE LIQUID DEVELOPER
demi-permanent gloss
tone-on-tone bottle application



6.5 VOL (1.95%) HUE-VERSE CREAM DEVELOPER
demi-permanent gloss
tone-on-tone brush application



10 VOL (3%) HUE-VERSE CREAM DEVELOPER
permanent colour
deposit · maintain · lighten up-to 1 level



20 VOL (6%) HUE-VERSE CREAM DEVELOPER
permanent colour
grey coverage · lighten 1-2 levels



30 VOL (9%) HUE-VERSE CREAM DEVELOPER
permanent colour
intense grey coverage · lighten 2-3 levels



40 VOL (12%) HUE-VERSE CREAM DEVELOPER
permanent colour
standard series: lighten 3-4 levels
high-lift blonde series: lighten 4 levels

NATURAL



INTENSE NATURAL



WARM NATURAL



ASH

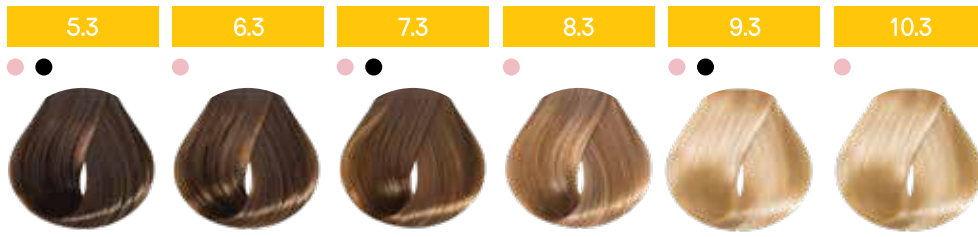


PEARL



-
- permanent colour
 - demi-permanent gloss
-

GOLD



SOFT COPPER



COPPER



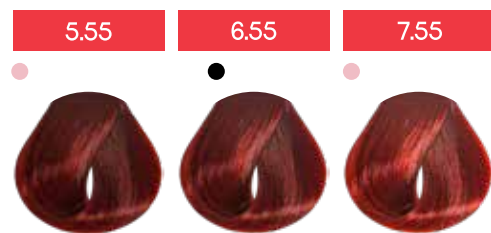
INTENSE COPPER



RED



INTENSE RED



VIOLET



VIOLET RED



BEIGE



COOL CHOCOLATE



WARM CHOCOLATE



HIGH LIFT



MIX TONES



